

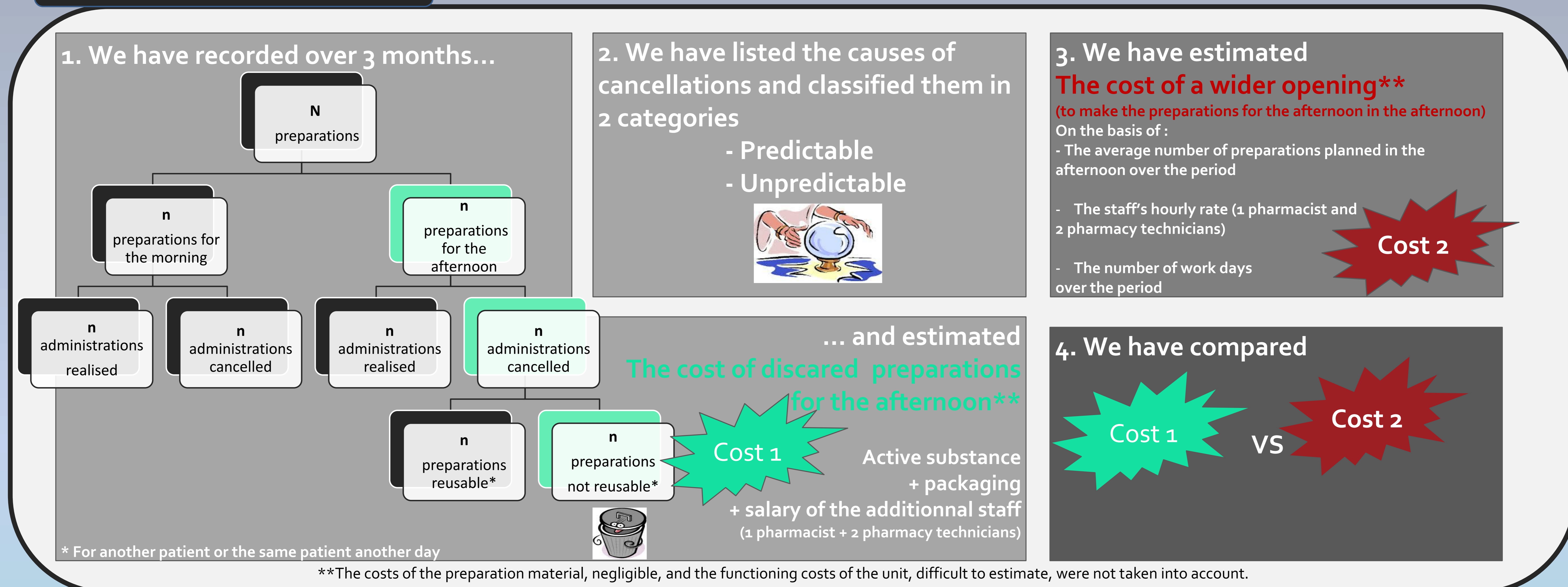
## Background

Our centralized Chemotherapy Preparation Unit is only opened in the morning (5 days a week). Our annual production is 11 000 preparations for 4 different care units. Currently, the chemotherapy infusion of the afternoon patients are prepared in the morning (even if the active substance is expensive) and discarded if the administration is cancelled. To rationalize costs, the unit is considering the option of opening all day long.

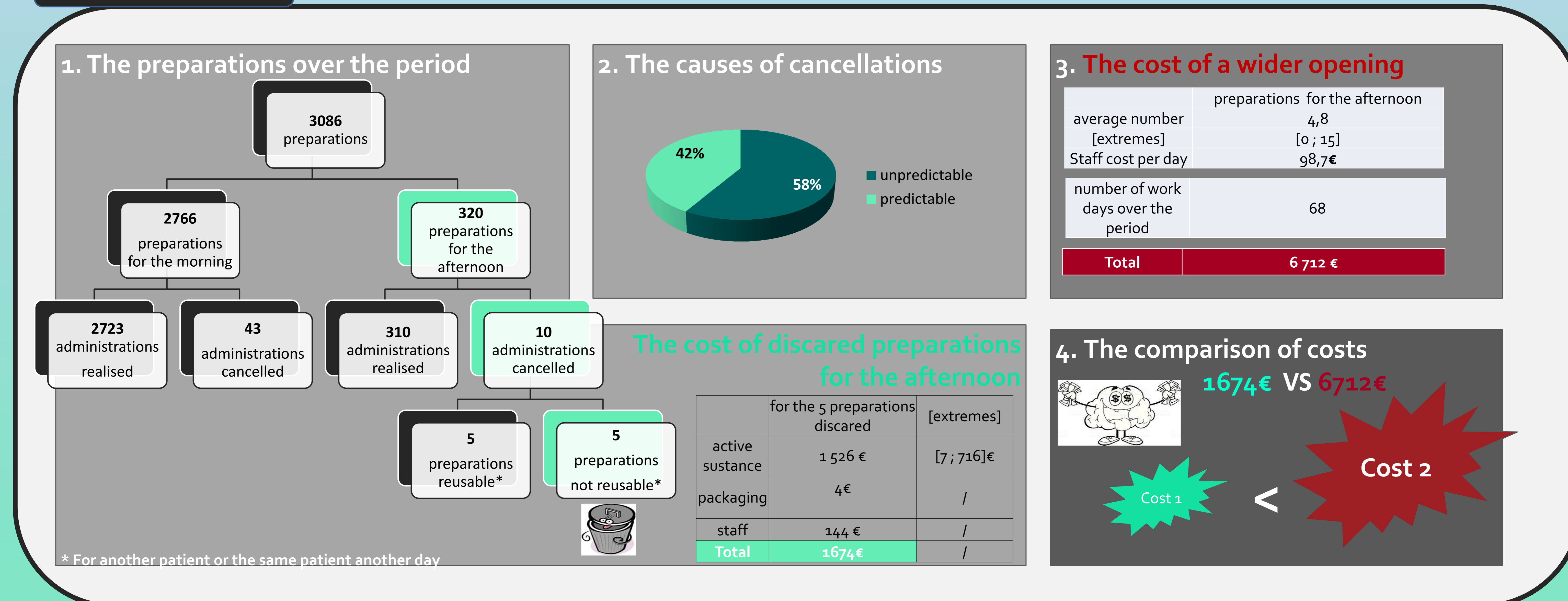
## Purpose

This study aim to estimate the profitability of an **opening of the unit in the afternoon** compared with **the loss related to the cancellations of the preparations produced in the morning for the afternoon.**

## Material & Method



## Results



## Discussion

The cost of an all day opening is high because of a staff requirement. Currently, **it does not seem appropriate to extend opening hours.** A return of the results of the study to the care units is planned to raise awareness on predictable cancellations.