

A. Portela Sotelo¹, L. Martínez Valdivieso¹, I. Martín Niño¹, J.A. Santiago Crespo², A. Flor García¹, D. Barreda Hernández¹.
¹Virgen de la Luz Hospital, Pharmacy Department, Cuenca, Spain. ²Virgen de la Luz Hospital, Oncology Department, Cuenca, Spain.

BACKGROUND AND IMPORTANCE

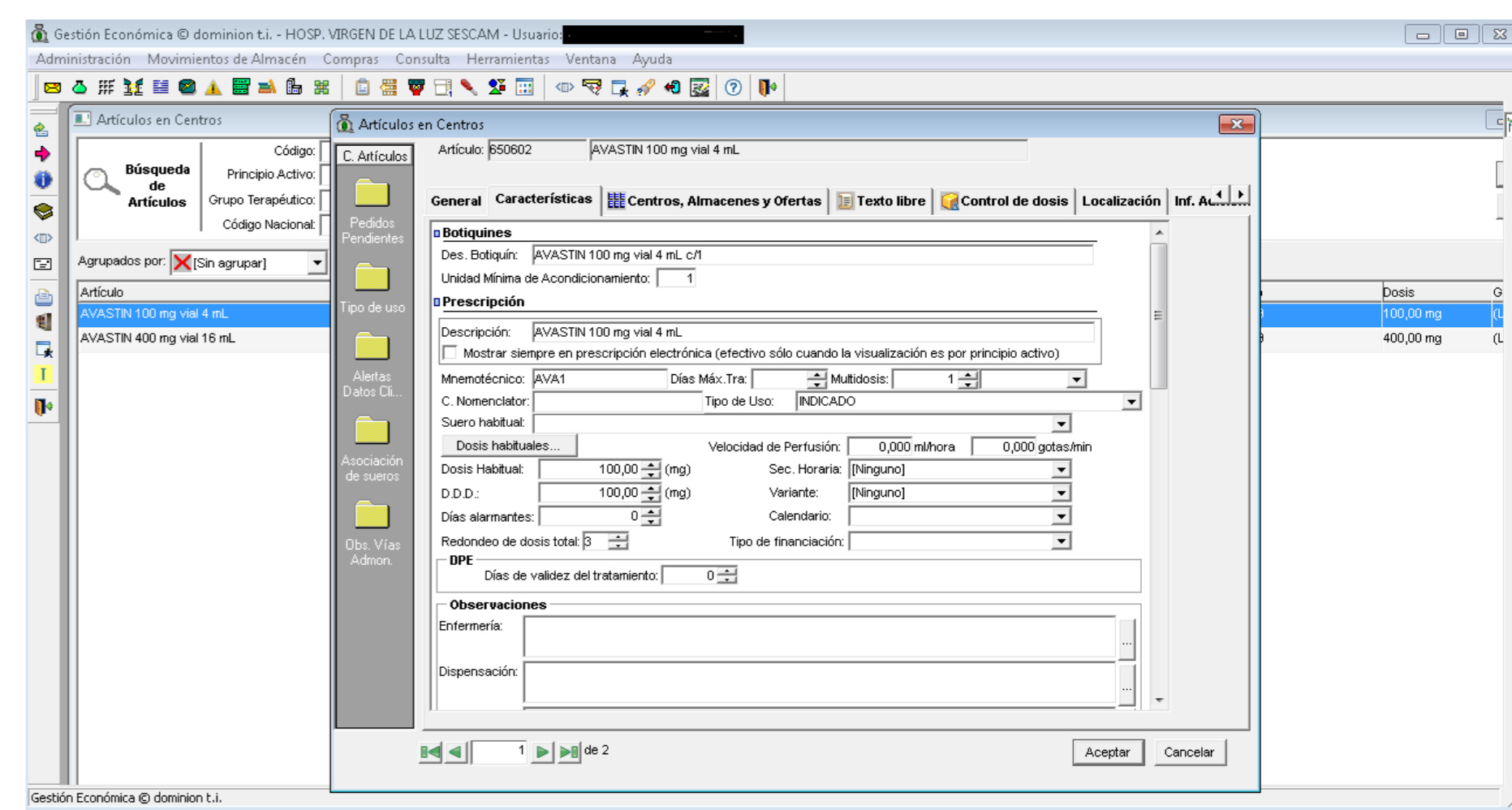
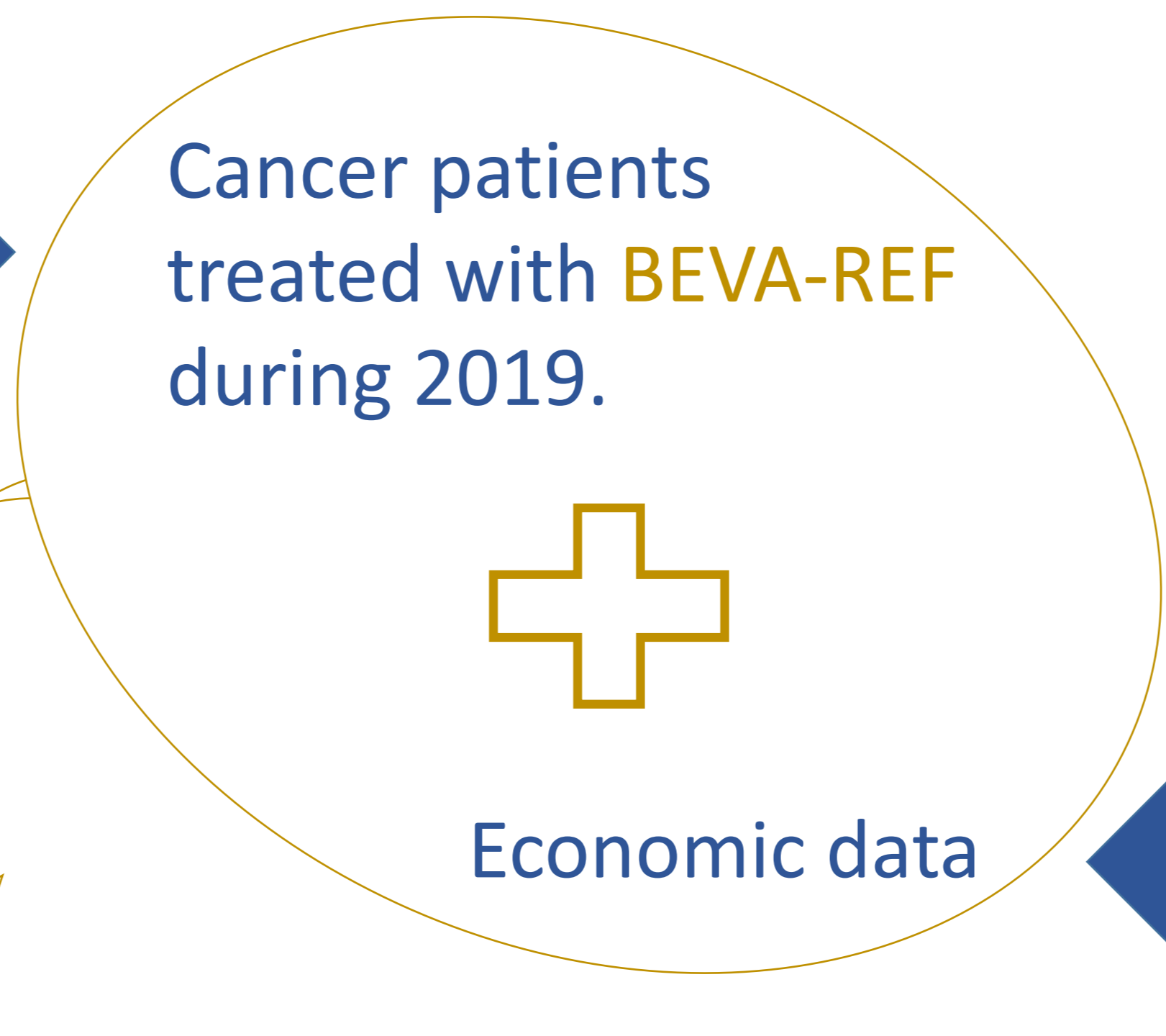
The recent approval of **BEVACIZUMAB BIOSIMILAR (BEVA-BS)**, raises the possibility of a **more efficient** drug therapy. **REFERENCE BEVACIZUMAB (BEVA-REF)** was positioned as the cancer drug with **the greatest impact** in our Health Area in 2019.

AIM AND OBJECTIVES

To evaluate the **pharmacoeconomic impact** of **BEVA-REF** in oncological therapy in 2019 and to analyse measures that promote its **therapeutic optimisation**, such as more efficient dosage regimens (DR) and implantation of **BEVA-BS**.

MATERIALS AND METHODS

Descriptive retrospective study realised in a level-II hospital.



Gestión-Farmatools® module

Pharmacoeconomic analysis was analysed by **therapeutic cost BEVA-REF use in 2019**. Therefore, cost/indication consumption, and therapeutic scheme were recorded.

Therapeutic **optimisation** measures analysis, were conducted according to:

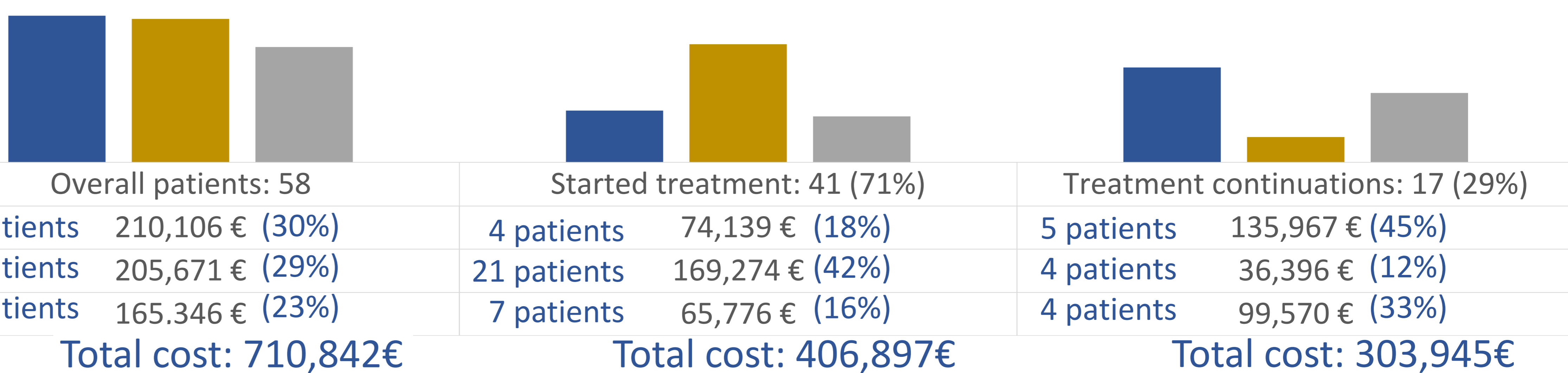
- Efficient DR**: in concordance with Product Monograph.
- Possibility of implantation BEVA-BS**: Hypothetical savings were estimated on 2019's annual consumption, assuming switching to Beva-Bs: **a)100%** of patients; **b)only new patients**.

Variables (Excel®): indication, new patient/continuation in 2019, therapeutic scheme, treatment time.

RESULTS

COST BEVA-REF 2019

Highlighting according to indication:



THERAPEUTIC OPTIMISATION MEASURES ANALYSIS:

- The most **efficient DR** in mCRC was prescribed **100%**. In the remaining diagnoses, DR was achieved, except ovarian/endometrial cancer, with agreement of 45% and 0% respectively.
- Respect to possibility of **implantation BEVA-BS: HYPOTHETICAL SAVINGS**

HIGHLIGHTING ACCORDING TO INDICATION:	SWITCHING TO BEVA-BS IN ALL PATIENTS	SWITCHING TO BEVA-BS ONLY NEW PATIENTS
Breast cancer	92,450€	32,600€
Metastatic colorectal cancer	90,500€	74,500€
Ovarian cancer	72,750€	28,900€
Total savings	312,800€	179,000€

CONCLUSION AND RELEVANCE

The 2019 results show **efficient DR**, consequently the potential for **cost containment**, given the **incorporation of BEVA-BS** in our therapeutic arsenal, would be key for universal access to the best therapeutic option.