

Lead-time for delivery of chemotherapies at day hospital: difficulties of a chemotherapy compounding unit with two day hospitals on two sites

Levenbruck C¹, Badibouidi F¹, Marie A-S¹, Carola E², Gousseau C², Verbrigghe C¹

¹ Service de Pharmacie, ² Oncologie Médicale, Groupe Hospitalier Publique Sud de l'Oise, Boulevard Laennec 60109 CREIL

Background

Our hospital has two sites (Senlis and Creil) which are separated of 12 km with a day hospital on each location. The production of injectable anti-cancer drugs is centralized on a single location (Creil).

Methods

A prospective study was conducted on the chemotherapies circuit for one month. From the CHIMIO software, the timetables of the various stages of the circuit have been extracted : pharmaceutical validation, making, pharmaceutical checking. For the transport in the services, the pharmacist notes the time of departure. Upon delivery to the day-hospital, the carrier notes the time of delivery.

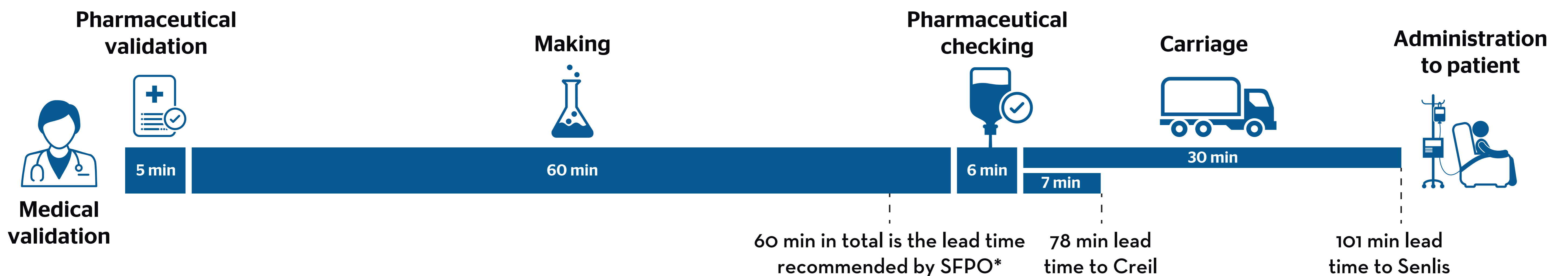
- For protocols with several specialties, only data concerning the first specialty were taken into account.
- Data was processed in an Excel file to calculate and analyze the Lead-time.

Objective

The objective was to evaluate the lead-time for delivery injectable chemotherapies to the day hospitals of our center. We also compared this lead-time to the recommendations of the learned society (SFPO).

Results

Figure 2: Time for each stage of the circuit without carriage delay



* French Society of Oncological pharmacy

774 units were prepared during the study period. The pharmacy period (from ok chemo to release) is on average 1h11. The frequency of delivery to the day hospital of the Creil site is average of 6 and 3 for the Senlis site per day.

Discussion & conclusion

The lead-times for delivery of chemotherapies at day-hospital of the Creil Site are acceptable compared to the SFPO (the learned society) recommendations. However, these lead-times are high for the Senlis site. We proposed corrective measures : the patient information sheet and an additional carrier for the Senlis site.

The information sheet explains to the patient the different stages of the anti-cancer drugs preparation. Every stage is detailed, which allows to provide information regarding the waiting time.

Other proposals were considered, such as anticipated preparations and an additional carrier for the Senlis site.

Figure 1: The stage of the circuit

- 1 Oncologist : Medical validation
- 2 Pharmacist : Pharmaceutical validation
- 3 Technician : Making
- 4 Pharmacist : Pharmaceutical checking
- 5 Carrier : Carriage
- 6 Nurse : Administration to patient

The overall time (from ok chemo to delivery in day-hospital) is on average 1h18 for the Creil site and 2h11 for the Senlis site. Because the waiting time between 2 deliveries for the Senlis site is on average 1 hour.

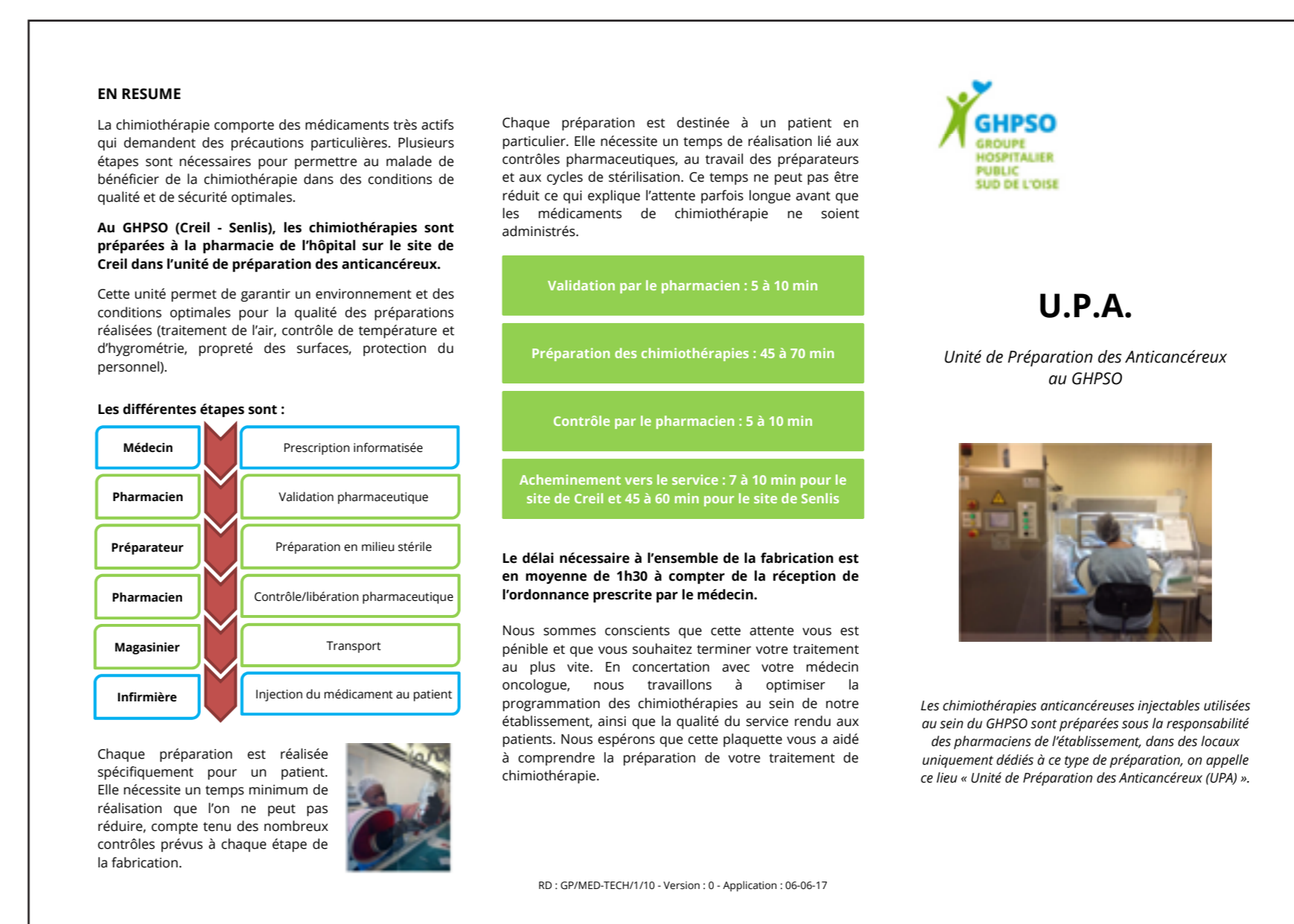
Acknowledgements:

Chemotherapy team : Kreitz Sigourney, Sialleli Melody, Certain Amandine, Kose Laetitia, Hery Frédérique, Misat Elodie, Zuppetti Caroline

Bibliography :

- Recommendations of SFPO

Picture 1: Front of the information leaflet



Picture 2: Back of the information leaflet

