

M. Iglesias, F. Salazar, J. Pardo, N. Meca, C. Sebastián, G. Garreta, J. Nicolás.
Hospital Universitari Mútua Terrassa, Pharmacy, Terrassa, Spain

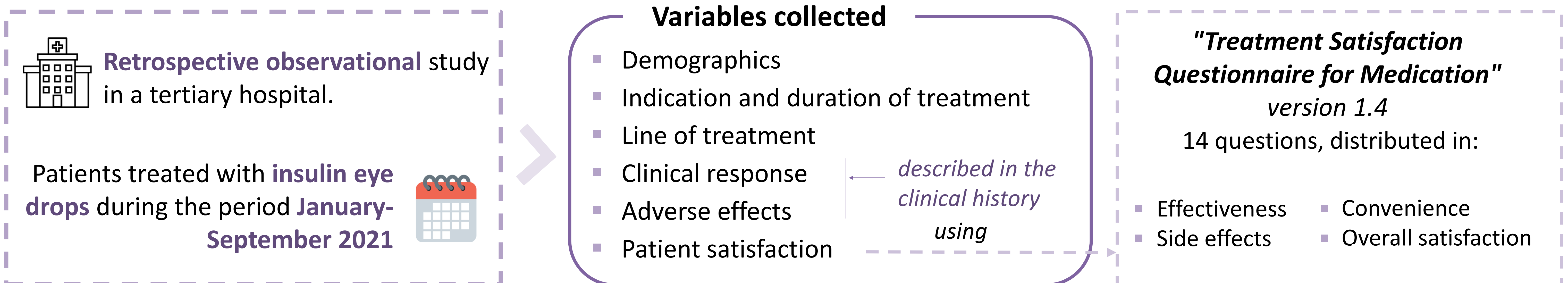
BACKGROUND AND IMPORTANCE

- Recently, the insulin eye drops formulation 1 IU/ml has been included in the Pharmacotherapeutic Guide. Recent studies demonstrate its **efficacy** and **safety** in the treatment of keratitis and dry eye.

AIM AND OBJECTIVES

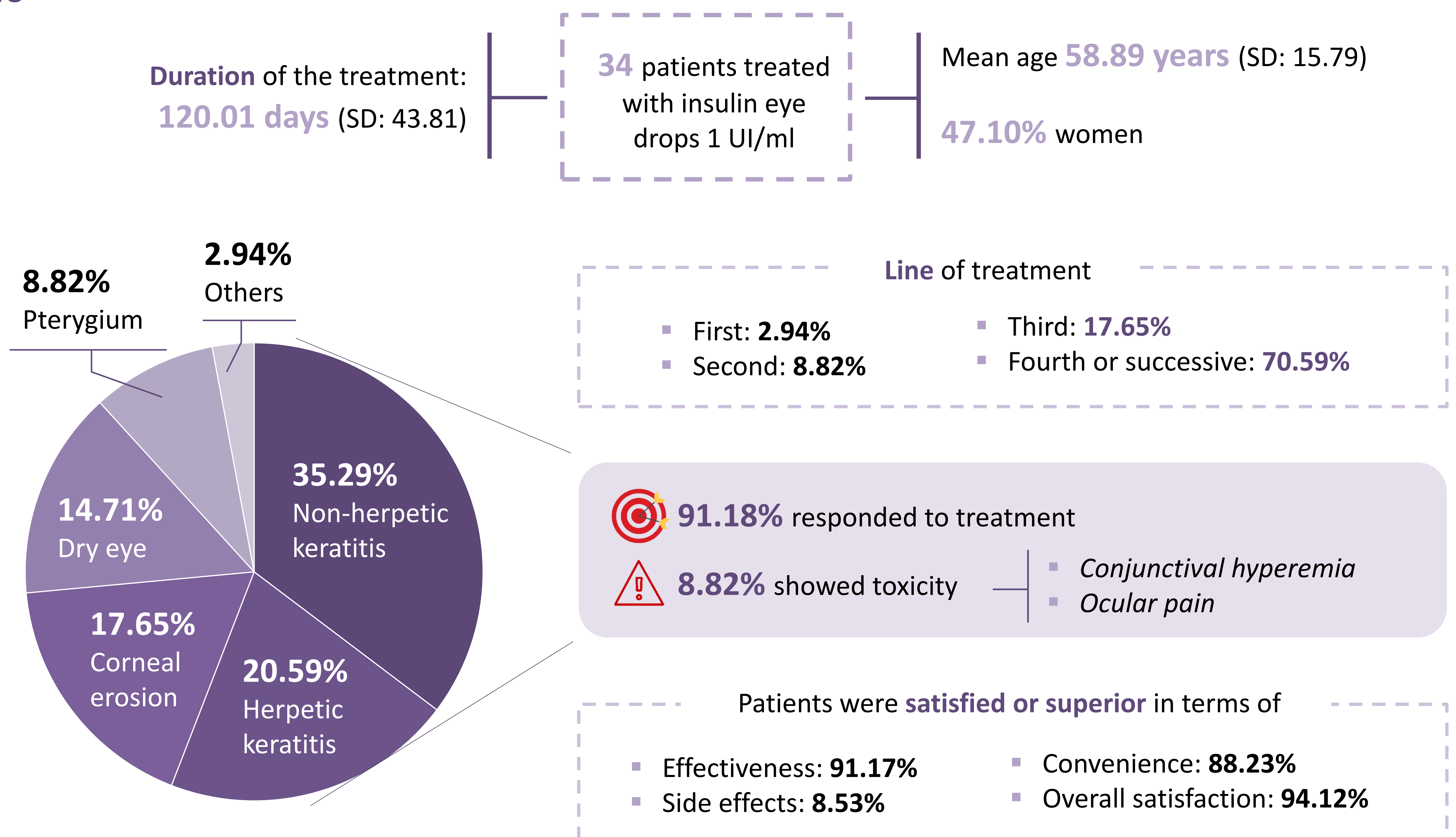
- To analyze the patient profile and describe the characteristics of insulin eye drops treatment, as well as its **effectiveness, tolerance** and **patient satisfaction**.

MATERIAL AND METHODS



A **descriptive statistical analysis** was performed with measures of central tendency and dispersion for quantitative variables (mean and standard deviation [SD]) and absolute frequencies for categorical variables.

RESULTS



CONCLUSION AND RELEVANCE

- The **insulin eye drops formulation 1 IU/ml** is a good therapeutic alternative as a **rescue treatment** in patients refractory to the usual treatments. The preparation, by the **pharmacist**, of formulas, allows to **cover possible therapeutic gaps** in the **treatment of herpetic and non-herpetic keratitis**.