

Rethinking the drug concept – the future medication logistics Odense University Hospital in Denmark



Clinical Pharmacist Cathrine Noergaard Peulicke & Pharmacist Michelle Lyndgaard Nielsen
Odense University Hospital, Clinical Pharmacy Unit (HEKLA), Odense, Denmark

What was done?

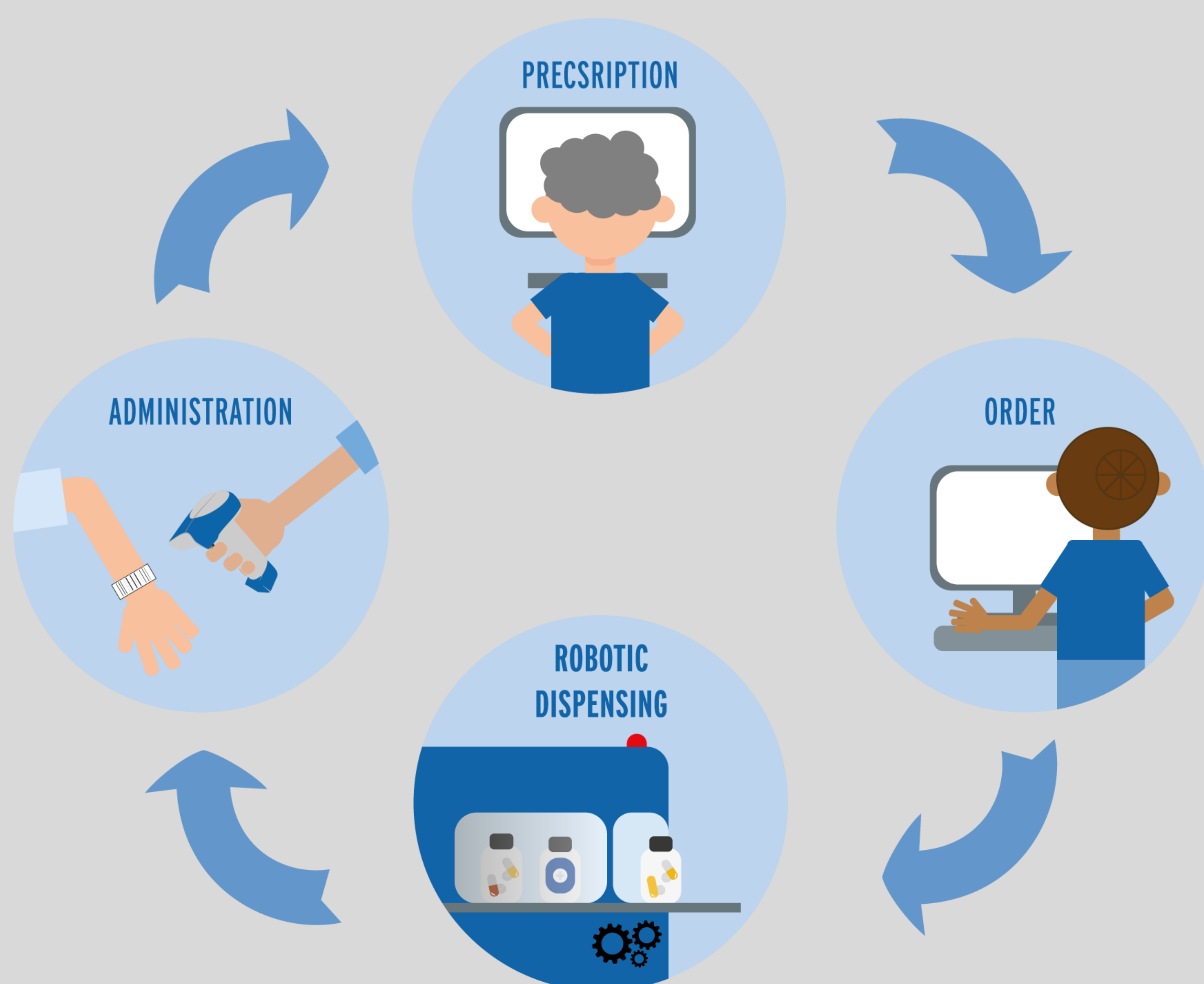
- At the new University Hospital, the medication logistics will undergo major changes.
- Only medication for acute use is at the wards, the rest will be delivered ready to use from the main pharmacy or from a decentralized unit, called Pharmaservice.
- IV-solutions with short expiration are being reconstituted and oral solutions are dosed according to the prescription. Tablets and capsules are dispensed in the multi-dose robot at the main pharmacy.
- When administering the multi-dose medication, the bar code is scanned to obtain full electronic documentation.
- The medication is dispensed and delivered just in time in boxes for each patient at the wards.
- In order to ease the transformation, we have built a mock up of a Pharmaservice unit where this set-up is enrolled to all inpatient wards in the hospital on the Geriatric ward, Children's Ward and Gynaecology and Obstetric ward.

Why was it done?

- Our codex is “the patient first”.
- We wanted to ensure that the concept functioned from a patient safety perspective, patient flow perspective, patient involvement perspective, professional development perspective and perspective of a healthy operation.
- The vision is “the right medication, to the right patient, from the right hand at the right time”.

How was it done?

- A steering group was founded and membered by managers from the wards and the hospital Pharmacy.
- Frequent meetings has been necessary to ensure competences and communication.
- Post implementation we are closely evaluating the initiative.



What has been achieved?

- Patient safety is in focus and with the multi-dose dispensing robot we have achieved full electronic documentation from the prescription, dispensing and administration.
- We have reached closed loop medication.

What is next?

- We have now implemented the initiative on three wards and we are now working on enrolling this to the entire new Hospital, when it is ready in 2025.
- At the new Hospital, we will have five Pharmacy Service Units servicing all inpatient wards.



E-mail:
Cathrine.noergaard.peulicke@rsyd.dk
mln@rsyd.dk

Disclosure

Authors of this presentation have the following to disclose concerning possible financial or personal relationships with commercial entities that may have a direct or indirect interest in the subject matter of this presentation:
Cathrine Noergaard Peulicke: Nothing to disclose & Michelle Lyndgaard Nielsen: Nothing to disclose